



CATALOGUE

July 2023



Canopies | Accessories | Roof Racks | Awnings Rooftop Tents | Cargo Slides | Storage Systems

***Prices are subject to change**

CONTENTS

Contents	2
Standard Features	3
Vehicle Models	4
Canopy Trim Levels.....	6
Canopy Features	8
Colour Options.....	10
Canopy Accessories	12
Loadslider & accessories.....	14

STANDARD FEATURES



- ✓ Toughened rear window glass
- ✓ Laser cut aluminium doors
- ✓ Heavy duty locks keyed alike
- ✓ Seamless waterproof door hinges tested to 50000 cycles
- ✓ Rear door grab handle
- ✓ Rear door tapered to match vehicle shape
- ✓ 500 kg rooftop carrying capacity
- ✓ Reinforced aluminium frame 6063 T6 extrusions



- ✓ Fixed glass front window
- ✓ Pressure equaliser vent
- ✓ All doors double lined with automotive rubber
- ✓ Accessories can be added easily
- ✓ Smooth corners no visible welds
- ✓ Fitted with heavy duty "no drill" brackets
- ✓ Welded rear door supports
- ✓ Double back door seal

VEHICLE MODELS

We manufacture canopies & accessories for the following vehicle makes and models;



Double Cabs

New 2022 Ranger
Ford Ranger T5/T6/T7/Wildtrak/Raptor
Toyota Hilux 2005-present
Toyota Land Cruiser
Mazda BT-50 2008-present
Isuzu DMax 2008-present
VW Amarok
Nissan Navara D23 and D40
GWM P-Series
Mahindra



Super Cabs

Ford Ranger 2012-present
Mazda BT-50 2012-present
Toyota Hilux 2005-present
Isuzu DMax-present



Single Cabs

Ford Ranger 2012-present
Mazda BT-50 2012-present
Toyota Hilux 2016-present

CANOPY TRIM LEVELS

Entry Level Canopy



- Powder Coated aluminium frame
- Aluminium tread pattern panels
- Fixed glass windows front & back
- Three pop up doors
- Pressure vent
- *Add accessories at any stage

From \$4099.00 for double cabs

From \$4499.00 for super cabs

From \$5099.00 for single cabs

Pro Series Canopy



- Powder coated aluminium frame;
- White/black/charcoal or silver frame
- Powder coated aluminium panels;
- White/black/charcoal or silver panels
- Fixed glass windows front & back
- Three pop up doors
- Pressure vent
- Roof rails
- Rear window security barrier
- LED brake light
- Mounting points for all accessories
- *Add accessories at any stage

From \$5499.00 for double cabs

From \$5999.00 for super cabs

From \$6499.00 for single cabs

CANOPY FEATURES

Standard features of the Ground Zero Aluminium Canopy;

- 3000kg static load rating officially tested and certified
- Average canopy weight for double cabs +/-50kg
- Industry leading 12 year frame warranty & service plan linked to your unique serial number
- Pressure equalizer vent which neutralizes the pressure in the load bin and reduces dust
- To ensure adequate airflow if people or animals are in the load bin we would highly recommend a
- pop up air vent or side sliding windows.
- Continuous dustproof and waterproof hinges
- Reinforced heavy duty internal slotted roof bars allows you to easily add accessories with no drilling
- Slotted base extrusion which also allows you to easily add accessories without drilling
- 2 x high quality gas struts per door mounted onto 304 stainless steel brackets for added strength
- Large pressure lever locks with Neoprene weatherproof & UV resistant seals
- Toughened SABS safety glass front and back, rear window tinted for added security
- Canopy components are easy to repair/replace if damaged
- All of our canopies are easy to fit and remove using basic hand tools
- Add accessories at any stage allowing you to build your setup over time or all at once
- Over 30 additional add on accessories that can be fitted without any drilling
- Easily add a roof rack or load bars to allowing you to carry cargo/tents/ladders etc
- We offer advice on canopy options and accessory choices for commercial, leisure and overlanding

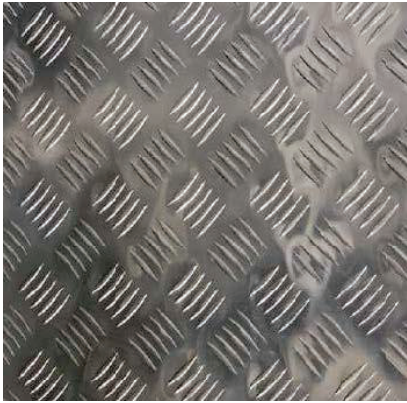
Pro Series Canopy Additional Features:

- LED brake light with wiring harness
- Internal magnetic battery operated switch light
- Rear window security barrier
- Frame colour choice black/white/charcoal/silver (colour matching optional)
- Doors & roof colour choice black/white/charcoal/silver

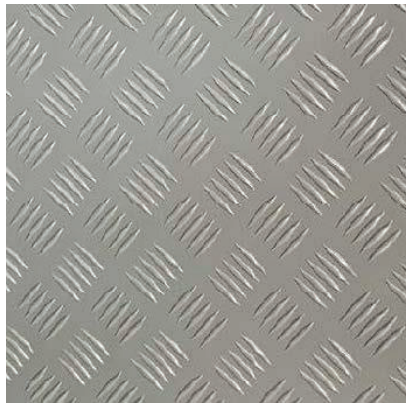


COLOUR OPTIONS

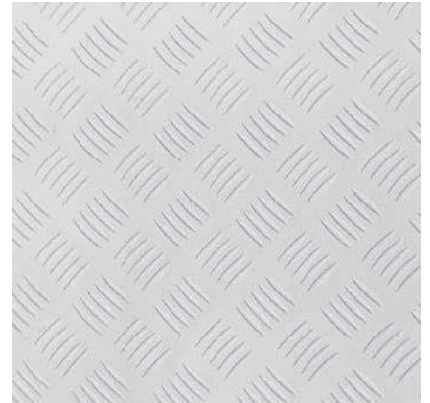
Checker plate panel colour samples



Raw Checker Plate



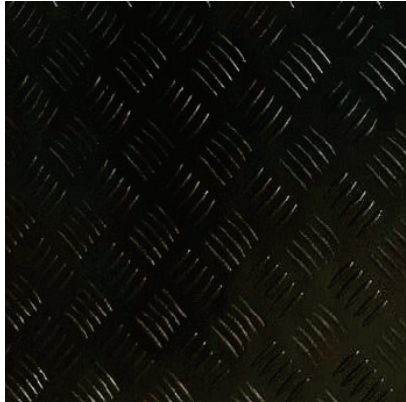
Silver Checker Plate



White Checker Plate



Charcoal Checker Plate



Black Checker Plate

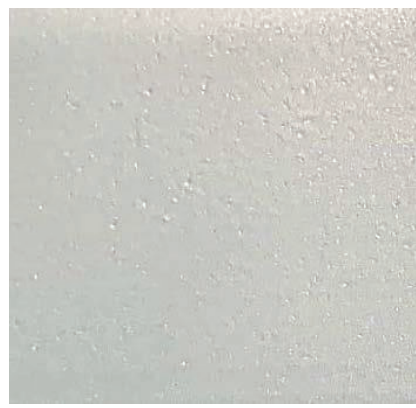
Smooth finish panel colour samples



Raw Smooth Finish



Silver Smooth Finish



White Smooth Finish



Charcoal Smooth Finish



Black Smooth Finish

*All colour and texture combinations available

*Vehicle colour matching also available on request

CANOPY ACCESSORIES



Roof Rails

From \$179.00



Roof Tray

From \$899.00



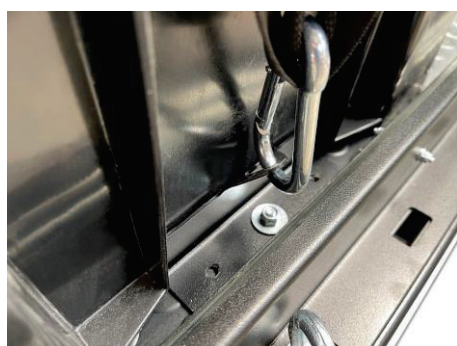
Storage / Kitchen Unit

From \$129.00



Storage Shelf (Boxes not included)

From \$399.00



Storage Shelf Tie Down Angles

From \$79.00



Rifle Storage Box

From \$359.00



Side Sliding Shelf

From \$599.00



Aluminium Camping Table

From \$499.00



LED Light Kit

POA



Load Bars with Adjustable Eye Hooks

POA



Roof Top Tent

From \$4950.00

LOADSLIDER & ACCESSORIES



Loadslider

From \$2199.00



Loadslider with Rails

From \$2498.00



Loadslider with Rails and Bin Boxes

From \$2727.00



Bin Box (Incl. Mounting Bolts)

From \$229.00



Corner Mounting Brackets

From \$39.00



Double Corner Mounting Brackets

From \$49.00



Fridge Slide/Drawer (90ltr)

From \$599.00



Side Mount Bin Boxes

From \$229.00



Loadslider Divider

From \$199.00



50 Ltr Water Tank

From \$399.00



Additional Eye Hooks

From \$10.00



Cable Protection Chain

From \$199.00